



- Municipal
- Commercial
- Government

Turn-key solutions to control traffic patterns, parking enforcement and site security



GORT INDUSTRIES

800•642•7289

Copyright © 2001

CS36-FM Installation Drawings

Please refer to "Site Selection Guidelines" and "Signage Documents"

Suggested Installation Materials:

- Equipment to saw cut installation trench, shovels, (3) Three concrete blocks, 12 to 16 bags of premix cement, Allen wrench, 3' straight edge, Trowel to finish cement, bag of pea gravel.
- The CS36-FM should be installed in a location where the vehicles approach and cross the unit at 90°
- If the vehicles will be crossing the CS36-FM in excess of 5 M.P.H., a speed bump and/or a Rumble Strip must be installed.
- Saw cut the installation hole no less than (See Figure #1) across and 36" wide and 11" deep.

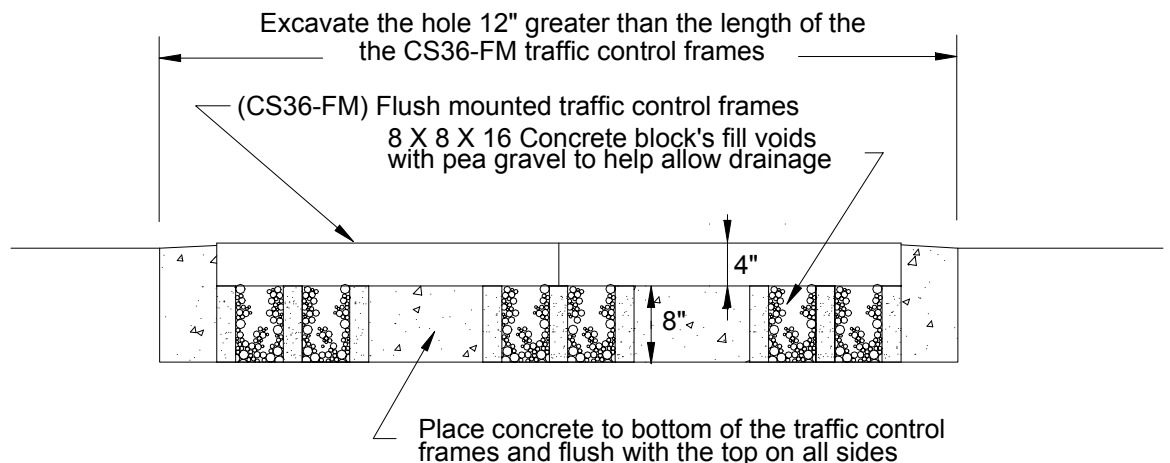


Figure # 1

- Remove the Top plate bolts from the CS36-FM and remove the Three top plates and place them to the side.
- Place and center the CS36-FM container box (frame) atop the two concrete blocks. A straight edge will be useful to determine when the box is $\frac{1}{2}$ " to $\frac{3}{4}$ " above the finish grade of the asphalt. (See Figure # 2)

- Municipal
- Commercial
- Government

Turn-key solutions to control traffic patterns, parking enforcement and site security



**GORT
INDUSTRIES**

800•642•7289

Copyright © 2001



(Continued from page 1)

- Fill the excavated trench with cement to the bottom of the CS36-FM container box and flush with the top on all sides. Care should be taken that **NO CONCRETE IS PLACED INSIDE THE BOX FRAME ABOVE THE BOTTOM FLANGE**. As this WILL (VOID) any warranties and damage the unit. Be sure that no cement is allowed to fall into the concrete block holes, these holes will be used for drainage.

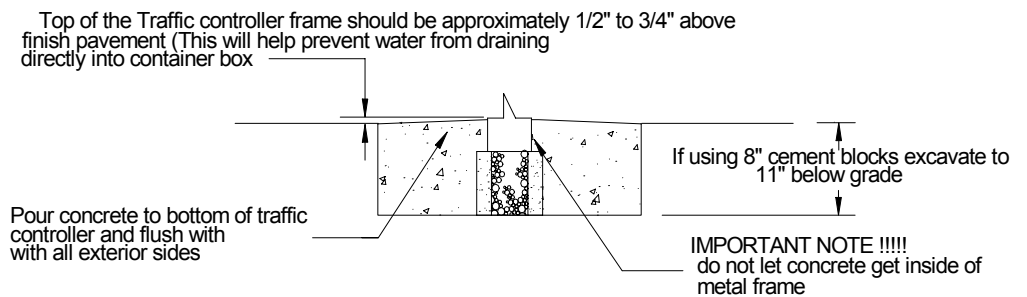


Figure # 2

- Finish filling the hole around the outside of the container until the cement is even with the top of the container box and the top of the asphalt.
- When the cement has begun to set up, fill the concrete block holes with pea gravel to prohibit debris from entering the hole.
- Allow the concrete to cure, and then reinstall the top plates. If needed use a screwdriver to align the container box with the holes in the top plate if they do not align when reinstalling the top plates.



- Municipal
- Commercial
- Government

Turn-key solutions to control traffic patterns, parking enforcement and site security



GORT INDUSTRIES

800•642•7289

Copyright © 2001

SITE SELECTION AND INSTALLATION

for Directional Traffic Controller

By observing, several common sense steps in locating and operating your traffic controller, it will give you long trouble free operation.

- The controllers are designed for standard commercial traffic, 22,000 pounds per axle on low-pressure pneumatic tires, crossing at speeds of 5 mph or less.
- The controller should be located in a flat section of the driveway where there is a minimum possibility of
- surface water draining into the unit potentially causing slow operation of the teeth.
- Provide adequate nighttime illumination of the unit together with a clear sign warning of its presence and potential tire damage.
- **Locate the controller away from pedestrian traffic or restrict pedestrians from the area.**
- Locate the controller at 90 degrees to the traffic flow. If necessary place posts so that wide turns cannot be made across the teeth. Crossing the teeth at any angle other than 90 degrees can cause tire sidewall damage.
- Make sure the unit is not located where it is likely that a driver could back out of stall and inadvertently cross the unit.
- Locate the unit where the maximum speed across the controller is 5 mph. Higher speeds cause excessive wear on the teeth, springs and top plates. If necessary, speed bumps and/or signs should be installed to control the speed.
- Locate the unit back far enough from a busy street so that an exiting car won't back over the teeth if traffic in the cross street won't yield and the vehicle has to retreat.
- After installation make sure that the top plates are securely bolted down. Failure to adequately tighten the top plate bolts can allow the top plates to warp and eventually strip out the screws causing misalignment of the teeth.
- Make periodic inspections and check for debris that will accumulate in the unit. Check to be sure the drainage channel is not blocked if heavy rusting is evident. Lightly coat the springs with waterproof grease.
- If you have any questions concerning the site where you are considering locating a Traffic Controller, call and we will be pleased to make specific recommendations.
- **NOTE: Locating a Traffic Controller where traffic is crossing at an angle other than 90 degrees or where a wide turn is possible or where vehicle speed is greater than 5 mph invalidates any warranty implied or real. If you have any questions about an installation, play safe and call for our recommendations.**



- Municipal
- Commercial
- Government

Turn-key solutions to control traffic patterns, parking enforcement and site security



800•642•7289

Copyright © 2001

Typical Installation w/ Ceramic buttons

