



**Gort Industries, Inc.**

3623 South 7<sup>th</sup> Street  
Phoenix, Arizona 85040

**Toll Free 1-800-642-7289**

Tel. (602) 243-0291  
Fax (602) 243-0294  
WWW.GORTIND.COM

## CS36-FM Installation Drawings

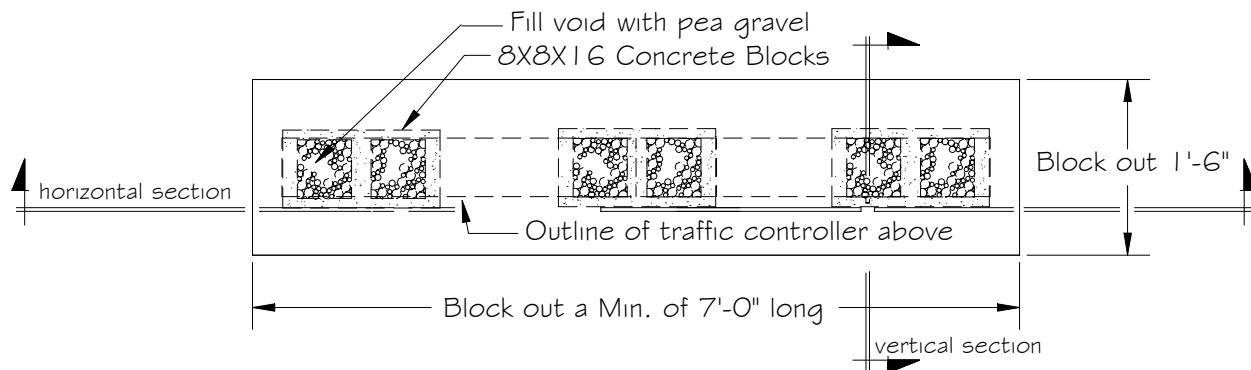


figure A - Plan view

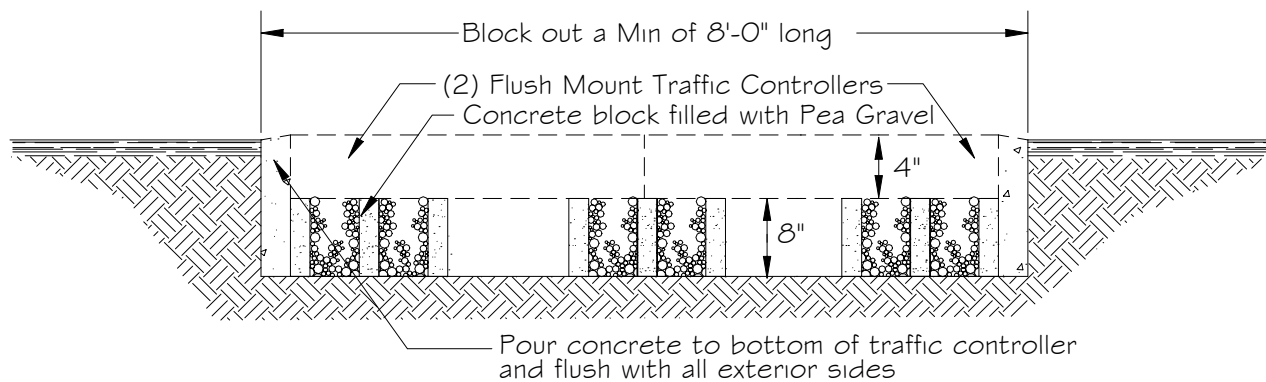


figure B - Horizontal section

Top of the Traffic controller should be approximately 1/2" to 3/4" above flush pavement (This will help prevent water from draining directly into container box)

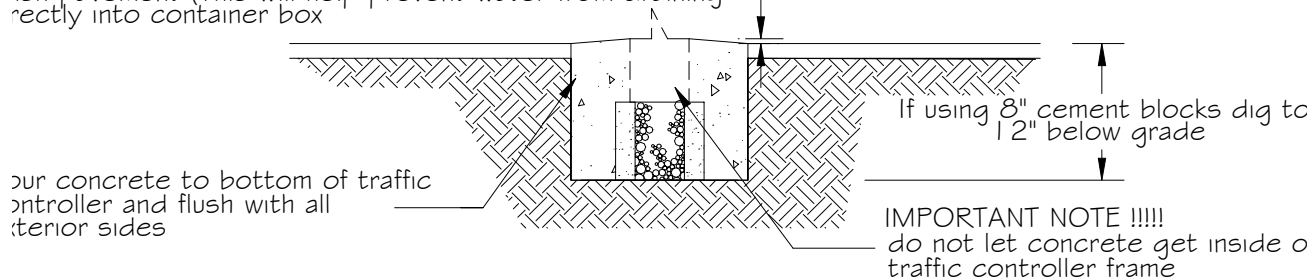


figure C - Vertical section